

LOGI INTERNAL SYSTEMS STIC



DC Roller Drive

Check-Weigher

Designed for Logistics and Industry

The dynamic IMPEL Check-Weigher has been specifically designed for the logistics and industrial sectors. With its in-motion weighing capabilities, it can reliably check cartons, boxes etc. weighing up to 100kg without decreasing production line speeds and still ensuring accurate results each time.

Customizable and Compact

Features such as adjustable transport rollers, height inclinations of up to 20 degrees and multiple interface designs, means that your business can gain maximum advantage from the IMPEL Check-weigher as it can be customized to suit you. Even when including the extra features, the IMPEL Check-weigher machines are still designed to be compact and easily fit into existing production lines and facilities.

Simple to Maintain

Designed with worker ease of use in mind, the IMPEL Check-weigher is an easy and straightforward machine to look after. Belt changeovers can be done in under a minute so you don't experience long periods of down time and can keep running and producing for longer.

Product Data Storage

With the IMPEL Check-weigher software capabilities, you can store weight, volume and other product information on your machine and recall it when necessary. Combine this with the machine's ability to link with barcode scanners, to check that the right barcode and weight information is on the right product, you can now easily track and trace your current and historical product information as the check-weigher is in use.

Product Description

IMPEL's Check-Weighers verify the mass of final products within quality control guidelines. It is important to distribute a valid, consistent amount of product to a consumer to ensure product safety and consumer satisfaction. Samples that are "under reject" or "over reject" (or in-between) can easily be discriminated from a batch and removed by an IMPEL Check-Weigher conveyor.

Whether you are utilizing a Check-Weigher for packaged products or loose product, IMPEL Check-Weigher ensures that your consumer base does not receive inconsistent volumes product. IMPEL Check Weighers are belt driven with DRUM MOTOR (vibration free), quick, efficient, and feature flaw rejection modes to improve your manufacturing process. In this conveyor there is no external geared motor for belt drive, to reduce the vibration and improve the efficiency.

Quality Design for Longevity

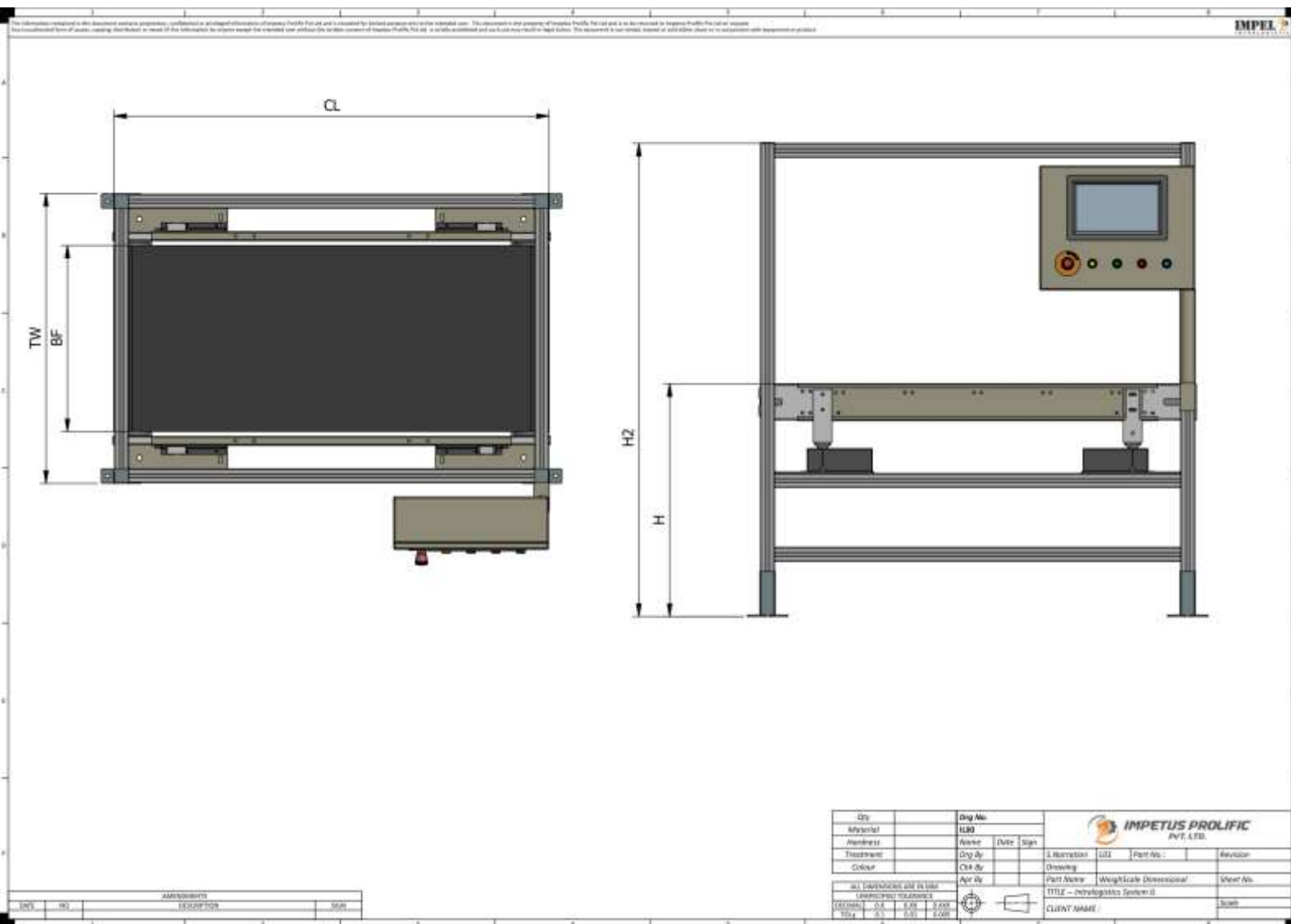
Made from either stainless steel or aluminum and including the latest technology. The IMPEL have designed a Check-Weigher machine that can withstand many different environments and run for years without losing its accuracy and reliability.



Check-Weigher

Technical Specification

General	
Operation mode	In-Motion
Weighing range	1kg to 100kgs
Min. calibration value	0.005kg
Sensor technology	Hybrid sensors
Interface	RS 232, RS 422, Profibus DP, Ethernet, Service-USB
Conveyors	
Conveyor speed	Standard up to 90mtr/min
Belt dimensions	Customised
Conveyor height	Customised
Roller diameter	Customised - As per design requirement
Protection Class	
IP 54/ IP65	
Ambient Temperature	
5°C - 50°C	
Options	
Control cabinet	
PLC	
Customer-specific modifications	
Electrical accessories	
Large digit display	
3 Colour tower light	
External Inputs/Outputs	





MOD APPROCH ULAR

www.impelintra.com

Impetus Prolific Pvt Ltd - Unit II

Survey No 286, Plot 1, Opp. Atul Auto, Veraval – Sapar, Rajkot 360024, Gujarat – India.
Phone: +91 9427944611 | info@impelintra.com