

LOGI INTERNAL STIC SYSTEMS



Sorting Products

Sorting Product

90 DEGREE BELT TRANSFER UNIT



Product Description

Key sorting elements such as transfers, diverts, lifts, stops, etc., are designed for the modular expansion and connection of conveyor lines. All elements can be combined with belt and roller conveyors and realise basic conveying functions such as stopping, distributing, lifting and lowering unit loads. They are often critical in system layout planning as their **sorting performance** can have a significant impact on the overall system throughput.

The 24V/415V Transfer performs sorting operations (i.e., in-feeding into and discharging of unit loads from a roller conveyor at an angle of 90°). Direction and orientation of the flow of goods are changed, meaning that long-way transportation becomes cross-way or the other way around. **Toothed belts** are raised by Interroll RollerDrives and the transfer itself can be incorporated at any position of the conveyor line and subsequently easily repositioned.



Sorting Product

Product Description

The Transfer 24 V is used for diverting or merging onto a roller track suitable material at a 90° angle. In the process, the unit load changes direction and its orientation, i.e. the side of the product will now be the leading edge after the transfer.

Product Information

Features

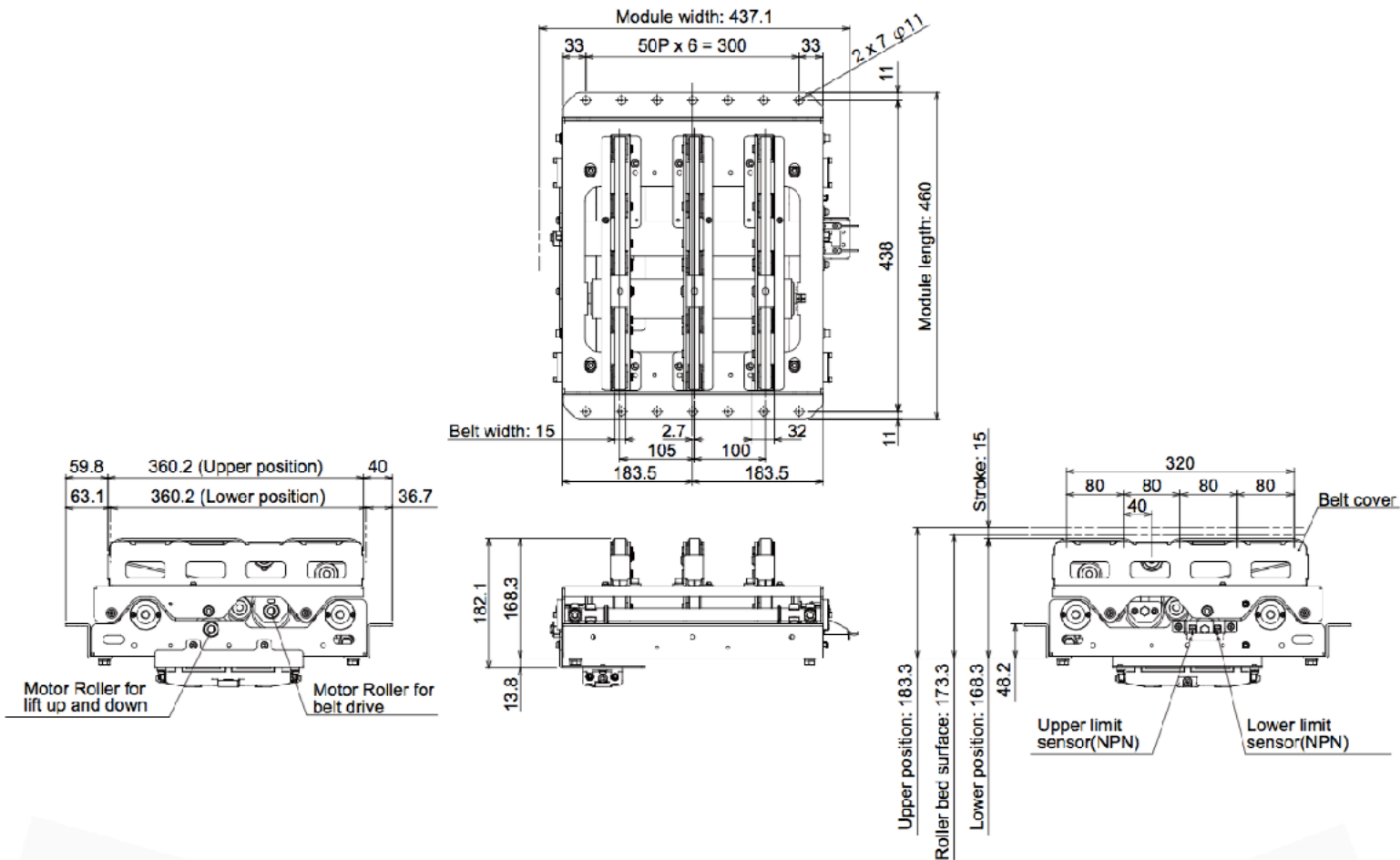
- ❖ CE Certified
- ❖ Low Profile Design
- ❖ Easy installation by mounting directly underneath conveyor frame
- ❖ Easy maintenance
- ❖ 2 DC roller drive for belt drive and lift up & down (No pneumatics)
- ❖ Customised (W, L dimensions and number of belt unit)
- ❖ Strong and oversized machine design

Technical Data

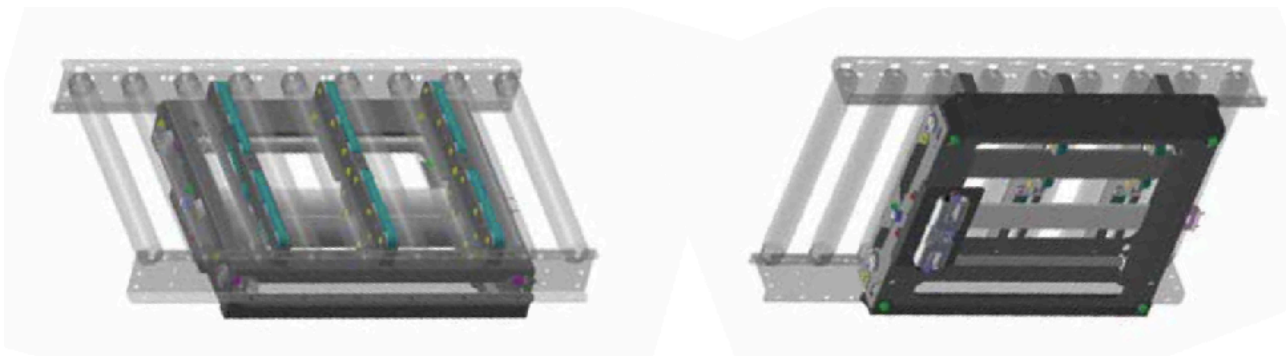
Volateg	DC24V
Roller Pitch	50 kgs
Belt Speed	60 m/min
Lift-up stock	15 mm
Through-Put	1500 / h *It varies depending on Product Size
Minimum dimnessons	W360 X L380 (For BF 380 MM)
Maximum dimensions	W960 X L800 (For BF 820 MM)
Ambient Temperature	-10 to 40° C (No Condensation)
Ambient Humidity	10 to 90% RH (No Condensation)

Sorting Product

Dimensions (Reference drawing for BF 400 mm Conveyor)

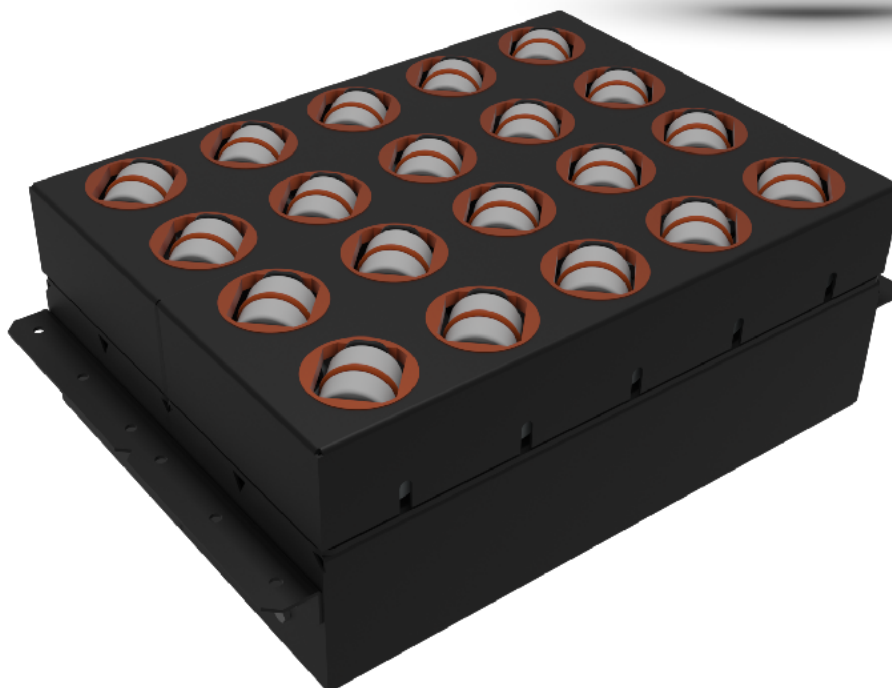


Installation Images



Sorting Product

HIGH PERFORMANCE DIVERTER



Product Description

The High Performance Divert (HPD) is used for diverting unit loads, preferably with smooth bottom surfaces, at different angles onto a lateral track to the right or to the left. The HPD is available in two drive variants:

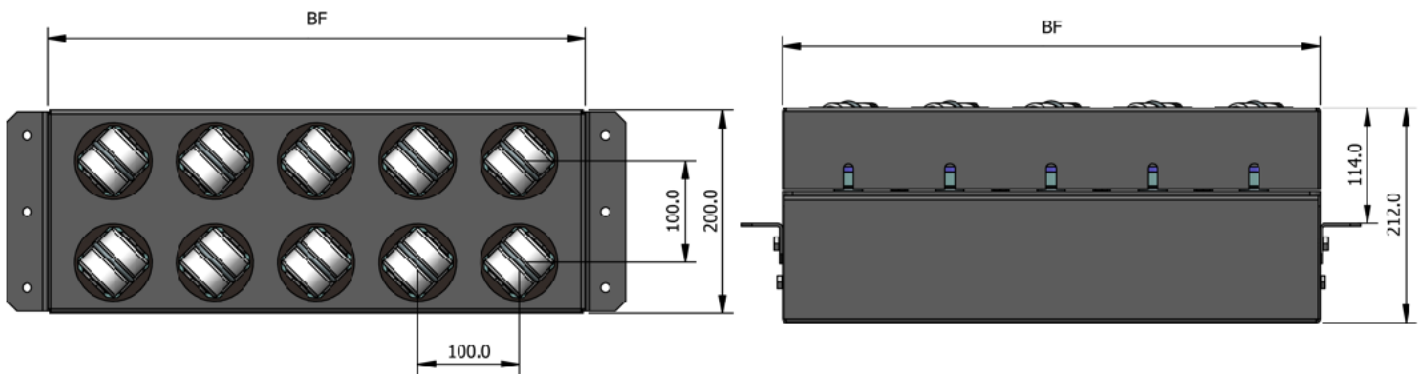
- HPD 24 V master, for which 24 V motors are used as travel and swivel drives
- HPD 400 V master, for which the travel drive from the flat belt conveyor is used, and the swivel drive is powered by a separate 24 V motor. One HPD module can consist of several cassettes, each 120 mm long, depending on the size of the product.

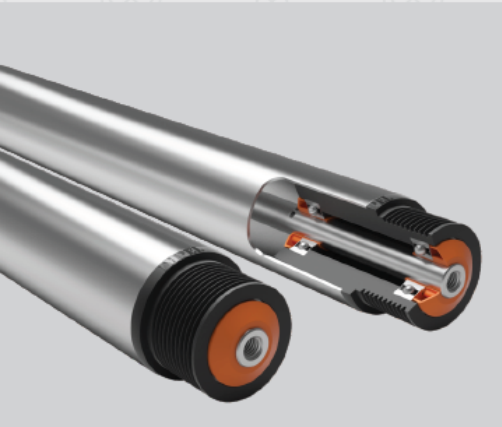
Sorting Product

Technical Data

General technical data	Max. load capacity*	50 kg
	Max. roller speed*	1.4 m/s
	Swiveling time	0.3 s per 90°
	Discharge angle	30°/45°/90°
	Ambient temperature	+5 to +40 °C
Swivel motor drive	Rated voltage	24 V
Travel motor drive	Rated voltage	24 V
	Control	MultiControl

Dimensions





MOD - APPROCH ULAR

www.impelintra.com

IMPETUS PROLIFIC PVT. LTD.

C-1/55, Road - D, Phase - 1, Aji GIDC, Rajkot 360003, Gujarat, INDIA

phone: +91 (281) 2384198 | direct no: +91 98795 99898 | email: info@impelintra.com

www.tes-india.com +91 281 2463346